



FOCUSED ON THE ACQUISITION AND
DEVELOPMENT OF HIGH GRADE COBALT
DEPOSITS

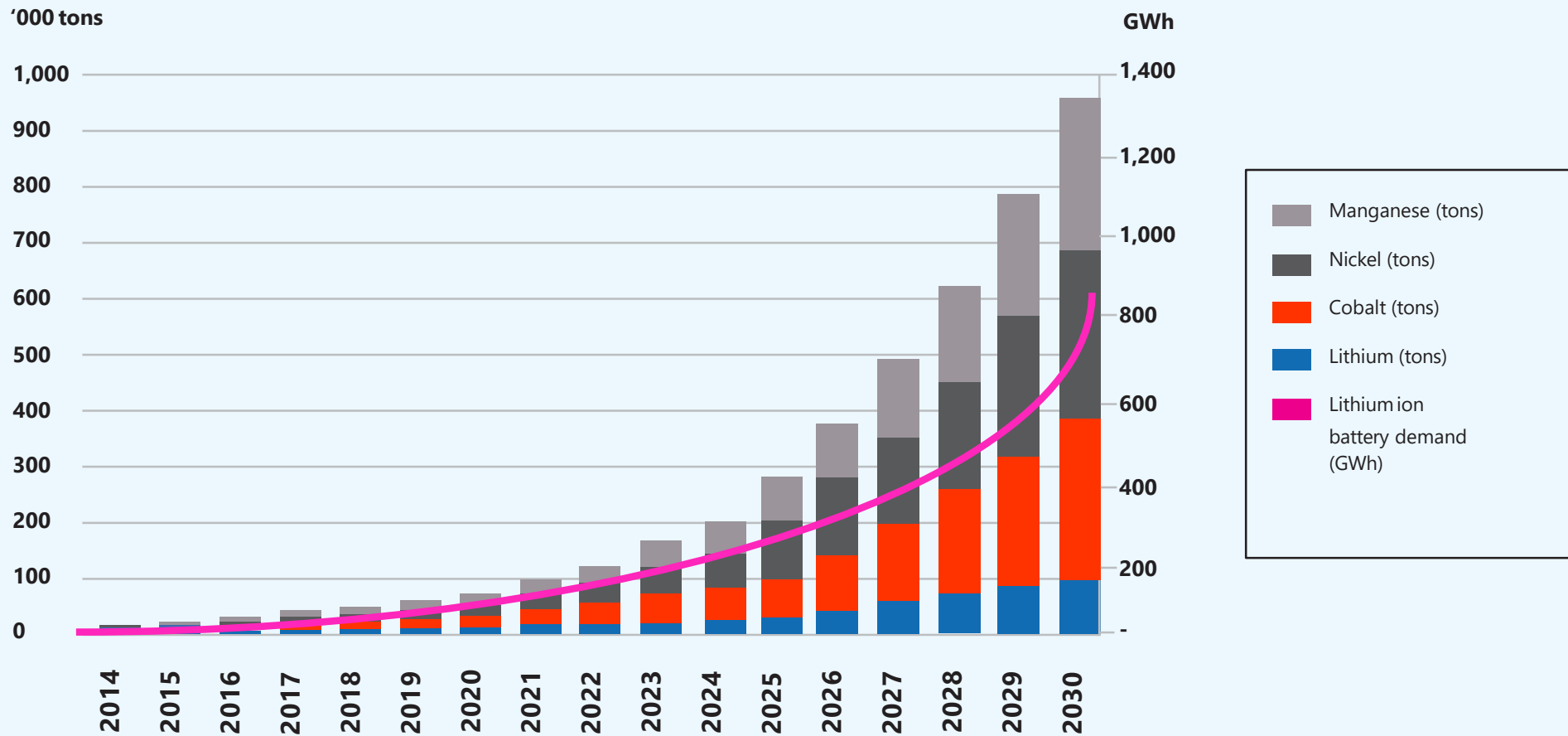
TSX.V: USCO, Frankfurt: 26X, OTCQB: USCFF

March 2018

Disclaimer

This presentation includes certain statements that may be deemed forward looking statements. All statements in this discussion, other than statements of historical facts, which address future production, reserve potential, exploration activities and events or developments that the Company expects, are forward looking statements. Such forward-looking statements include, without limitation: (i) estimates of future prices, supply, demand and/or production; (ii) estimates of future cash costs; (iii) estimates of future capital expenditures; (iv) estimates regarding timing of future development, construction, production or closure activities; (v) statements regarding future exploration results; (vi) statements regarding cost structure, project economics, or competitive position, and; (vii) statements comparing the Company's properties to other mines, projects or metals. Although the Company believes the expectations expressed in such forward looking statements are based on reasonable assumptions, such statements are not guarantees of future performance and actual results or developments may differ materially from those in the forward looking statements. Factors that could cause actual results to differ materially from those in forward looking statements include market prices, exploitation and exploration successes, continued availability of capital and financing, and general economic, market or business conditions. Investors are cautioned that any such statements are not guarantees of future performance, that the Company expressly disclaims any responsibility for revising or expanding the forward looking statements to reflect actual results or developments, and that actual results or developments may differ materially from those projected, in the forward looking statements, except as required by law. Mr. Garry Clark, P. Geo., Independent Director of USCO, is the qualified person as defined in NI 43-101, who has reviewed and approved the scientific and technical content in this presentation.

Cobalt Demand



Source: Bloomberg New Energy Finance

Cobalt price is expected to soar with the growth in demand for lithium ion batteries

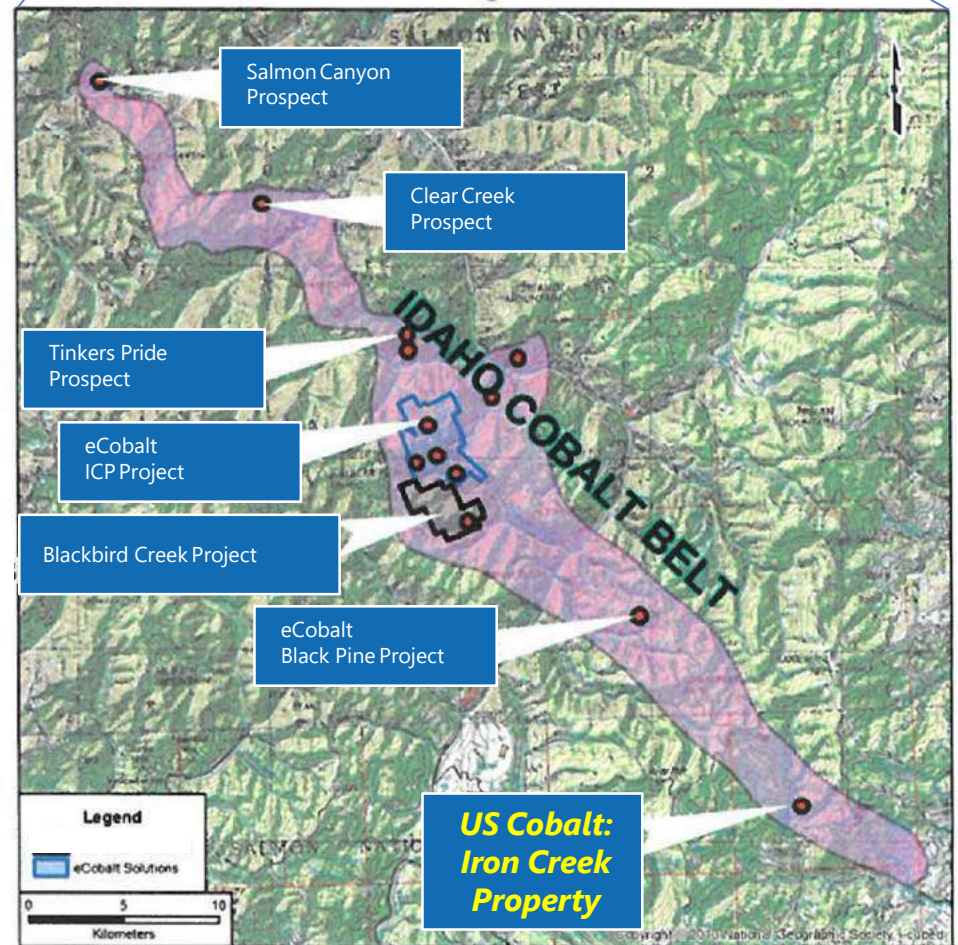
Idaho Cobalt Belt

ECobalt's IDAHO COBALT PROJECT (ICP):

- Permits understood to be largely in place
- 3.4 Mt@ 0.59% Co, 0.73% Cu, 0.016 oz/t Au (M+I)

In a Feasibility Study dated September 27, 2017, Micon updated ICP's Ram deposit estimate of cobalt, copper, and gold resources. The ICP is fully environmentally permitted having completed an Environmental Impact Statement and has received a positive Record of Decision on its Mine Plan of Operations from the U.S. Department of Agriculture National Forest Service and a water discharge NPDES (National Pollutant Discharge Elimination System) permit from the U.S. Environmental Protection Agency.

Initial construction of the project began in 2011, before the project was placed on Care and Maintenance in 2013 due to market conditions. In 2017 the Company recommenced pre-construction activities, and to date approximately 90% of the earthworks have been completed at the mine site.



US Cobalt's Iron Creek Cobalt Project, Idaho

Historic estimate, non compliant with NI 43-101, of **1.3m tons grading 0.59% Cobalt** - estimated by previous explorers.

Located in Central Idaho, approximately 42 kilometers from the town of Salmon

Property encompasses:

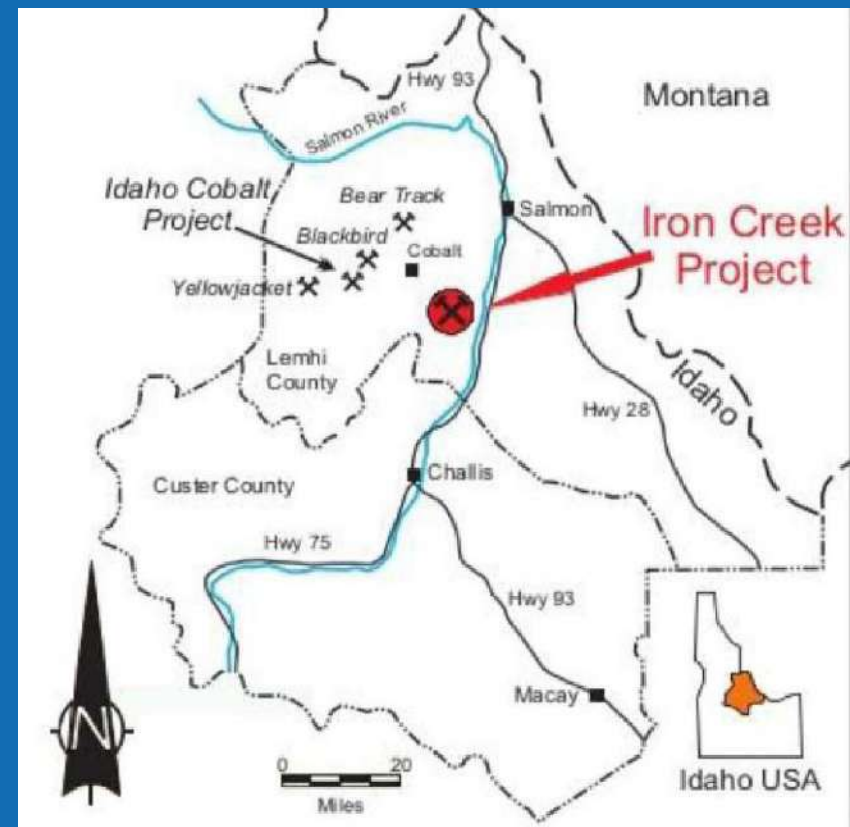
1,797 acres in 90 lode mining claims, including
7 patented claims totaling 137 acres, and
83 unpatented claims totaling 1,660 acres

28 kilometers south east of eCobalt's Feasibility Study stage, Idaho Cobalt Project, within a well known mineral trend known as the "Idaho Cobalt Belt", a NW-SE trending, 40 km long belt of cobalt mineralized Proterozoic-age Yellowjacket Formation sedimentary rocks

Discovered in the 1940's as a possible iron deposit. Explored for copper in the 1970's by Hanna Mining and later in the 1980's and 1990's by Noranda, Inspiration Mines, and Cominco

Historically, approximately 30,000 feet of diamond drilling and 2,000 feet of underground drifting was completed

US Cobalt Inc. has completed: approximately 35,000 feet (about 10,600 meters) of core drilling from surface, rehabilitated two of the three adits, and commenced underground core drilling.



Historic Estimates

USCO considers the cobalt and copper tonnage and grade estimates above as historical estimates. The historical estimates do not use categories that conform to current CIM Definition Standards on Mineral Resources and Mineral Reserves as outlined in National Instrument 43-101, Standards of Disclosure for Mineral Projects ("NI 43-101") and have not been redefined to conform to current CIM Definition Standards. They were prepared in the 1980s prior to the adoption and implementation of NI 43-101.

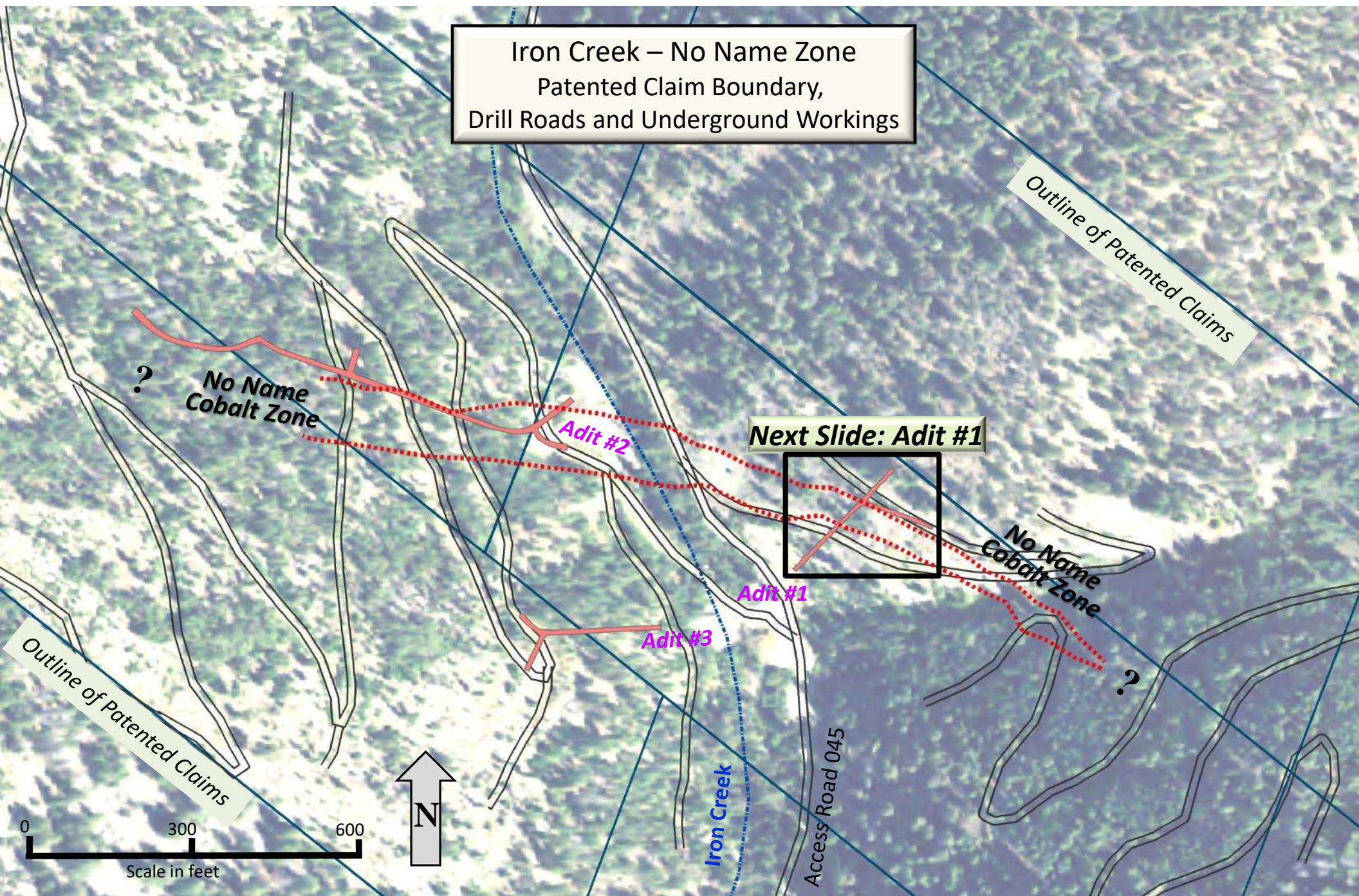
A qualified person has not done sufficient work to classify the historical estimates as current mineral resources and USCO is not treating the historical estimates as current mineral resources. More work, including, but not limited to, drilling, will be required to conform the estimates to current CIM Definition Standards. Investors are cautioned that the historical estimates do not mean or imply that economic deposits exist on the Property.

USCO has not undertaken any independent investigation of the historical estimates nor has it independently analyzed the results of the previous exploration work in order to verify the accuracy of the information. USCO believes that the historical estimates are relevant to continuing exploration on the Property.

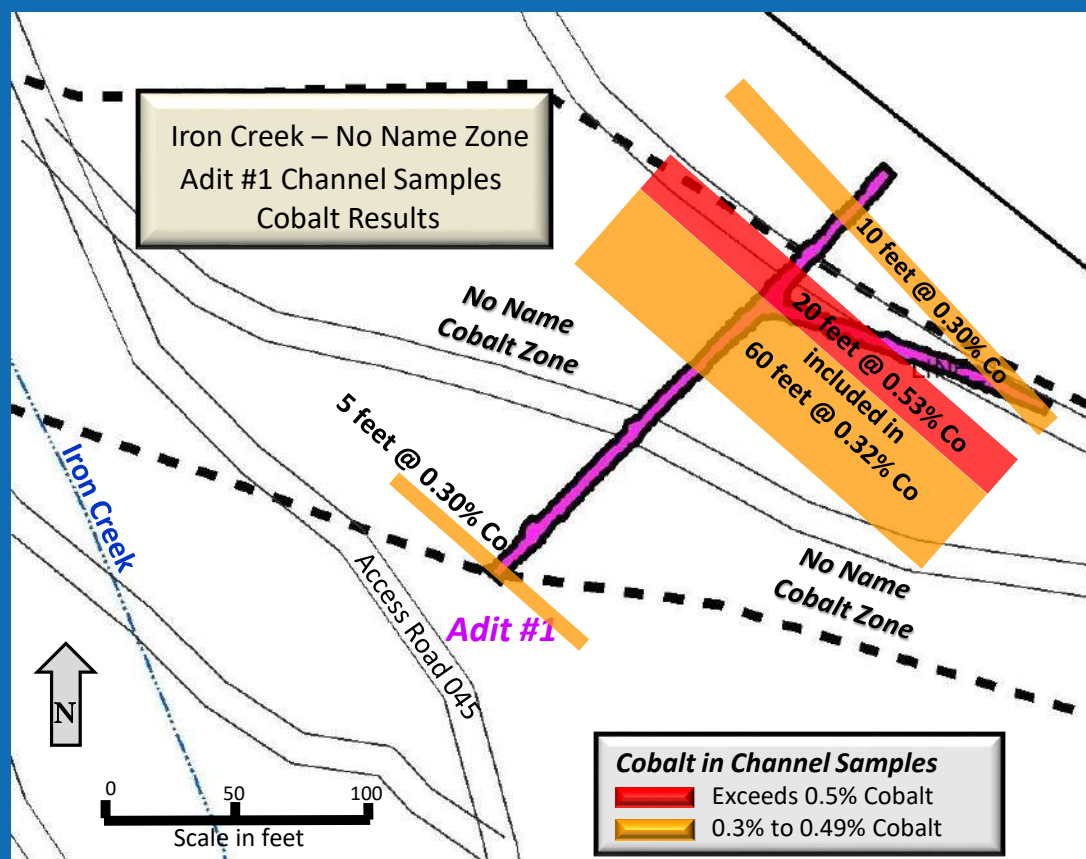


Erythrite - "Cobalt Bloom"
 $\text{Co}_3(\text{AsO}_4)_2 \cdot 8(\text{H}_2\text{O})$



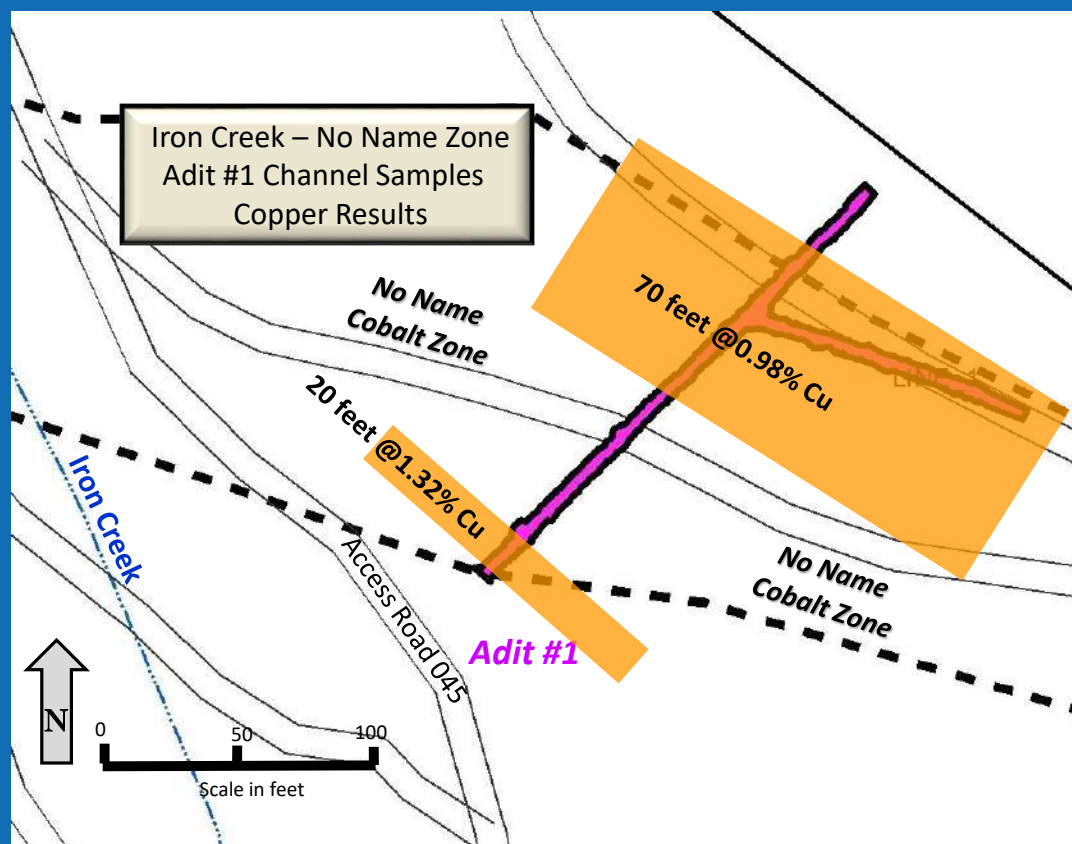


Adit #1 Channel Samples - Cobalt



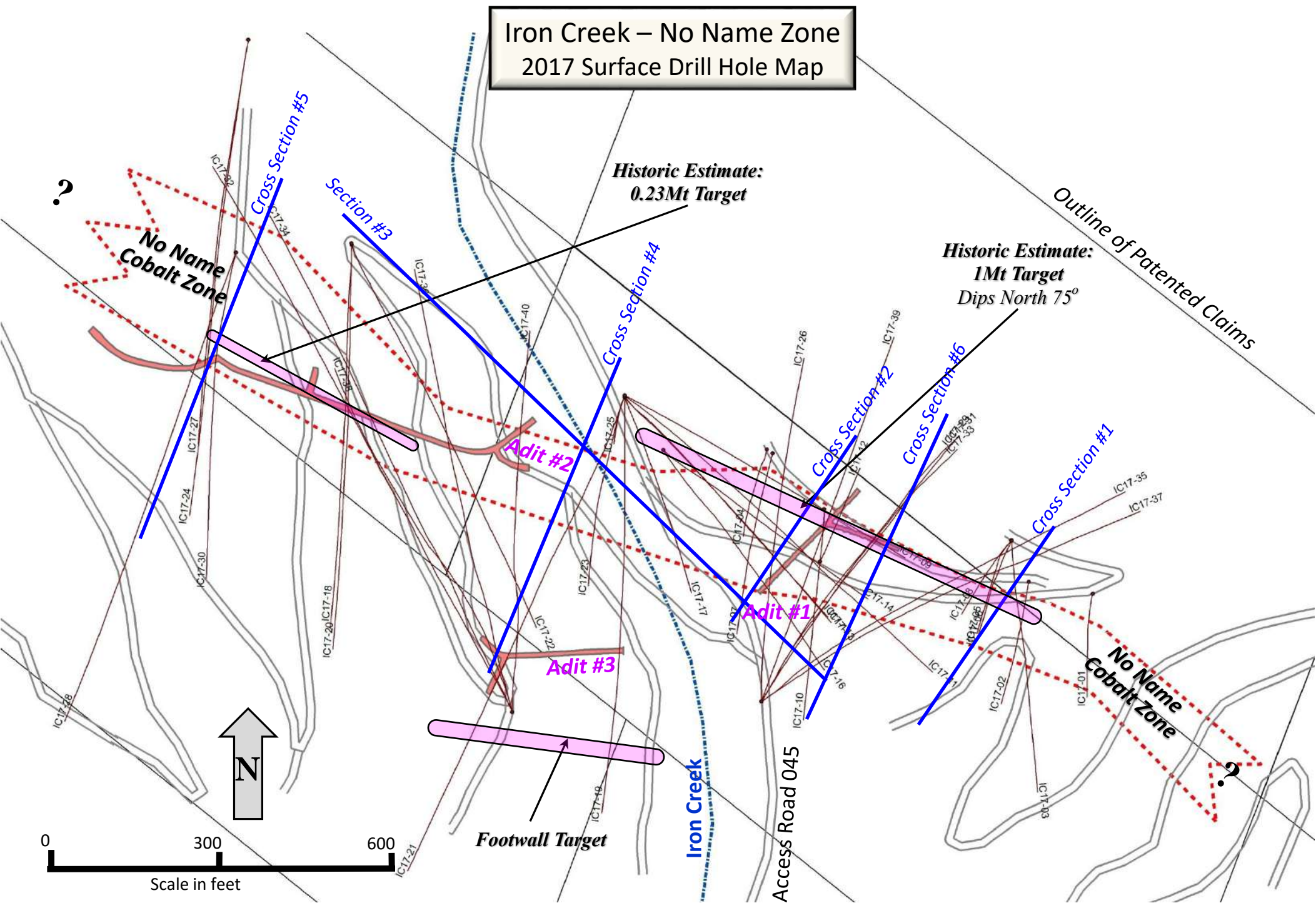
Adit #1

Adit #1 Channel Samples - Copper

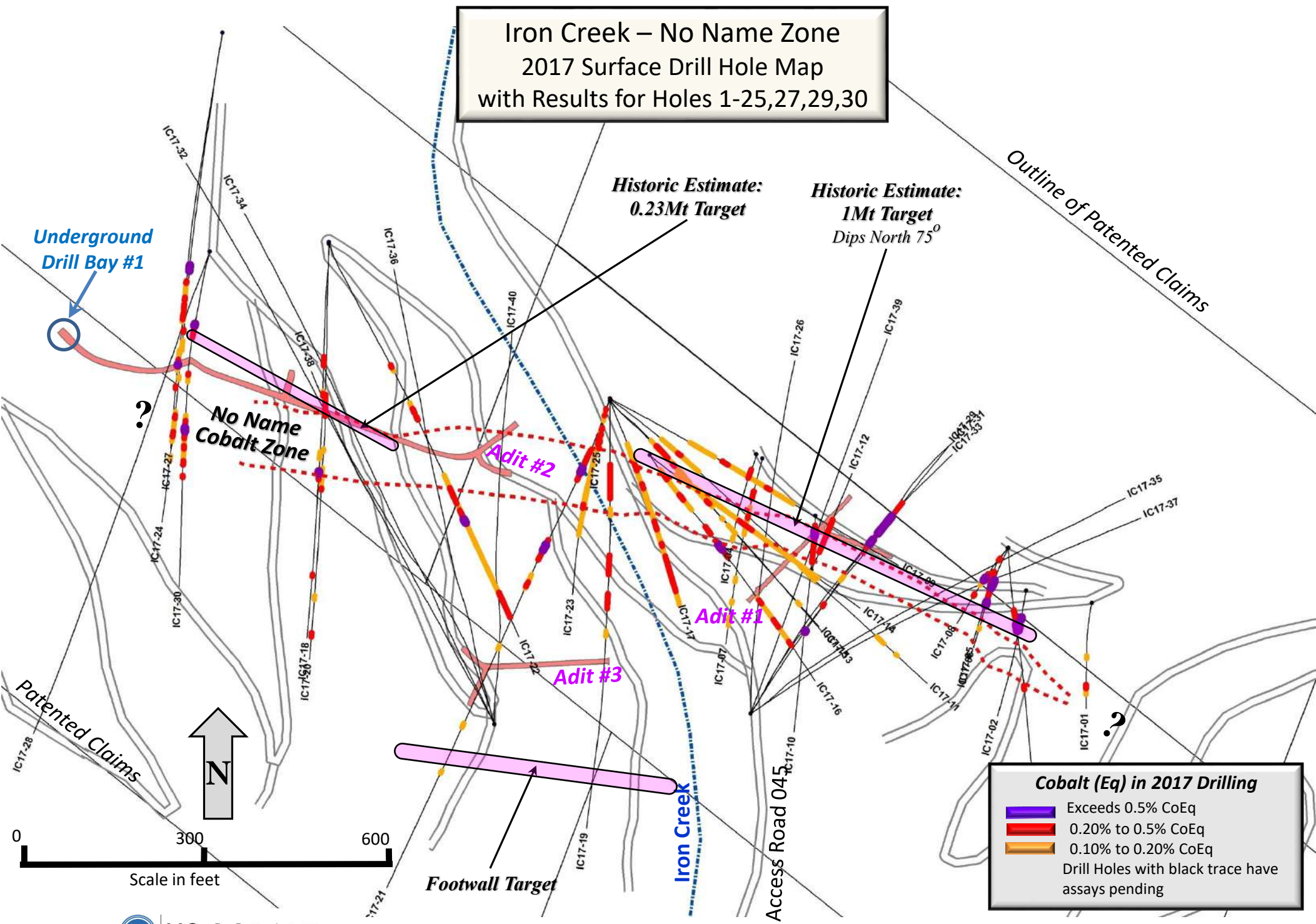


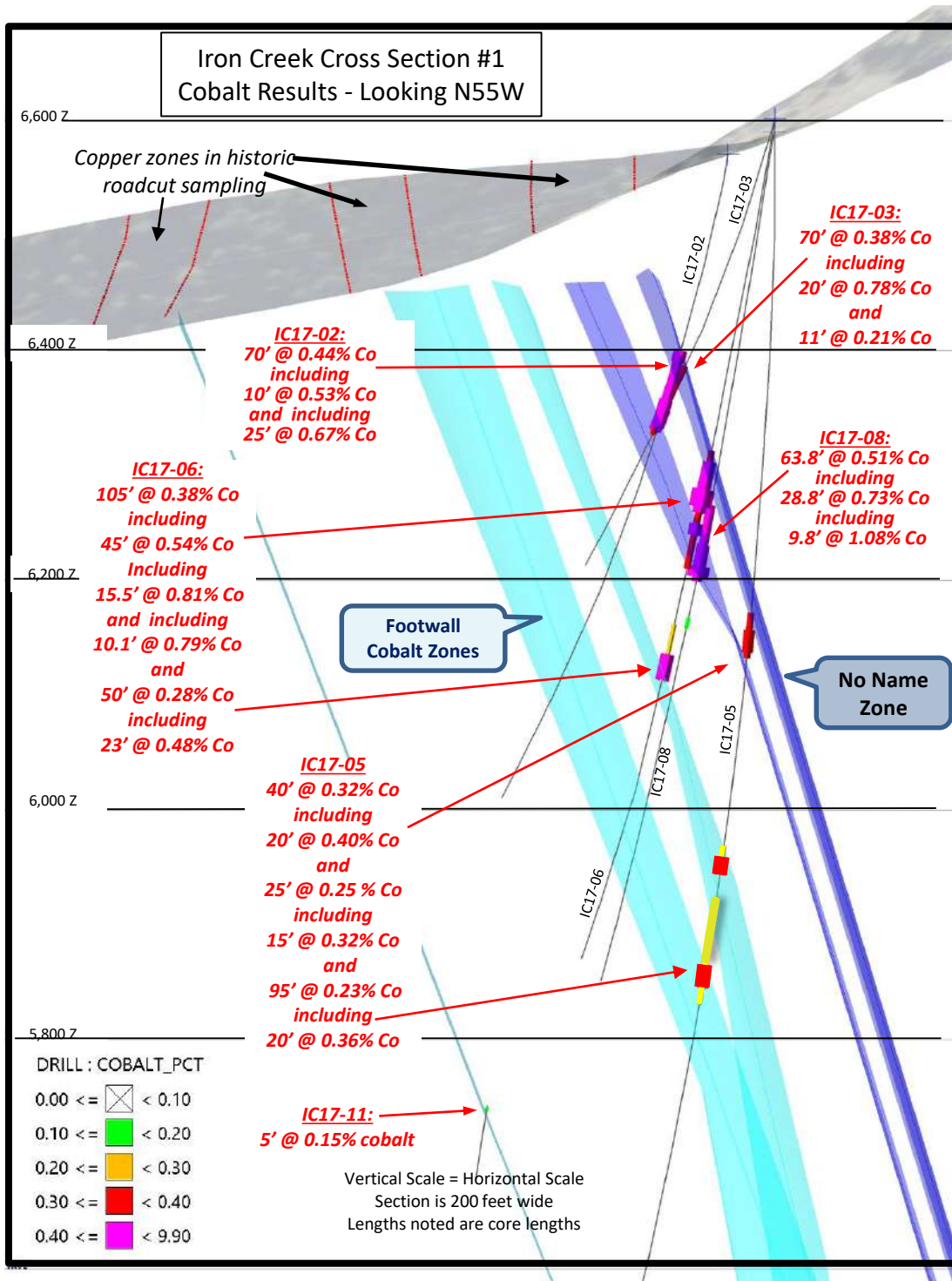
Channel Sample

Iron Creek – No Name Zone 2017 Surface Drill Hole Map



Iron Creek – No Name Zone
2017 Surface Drill Hole Map
with Results for Holes 1-25,27,29,30

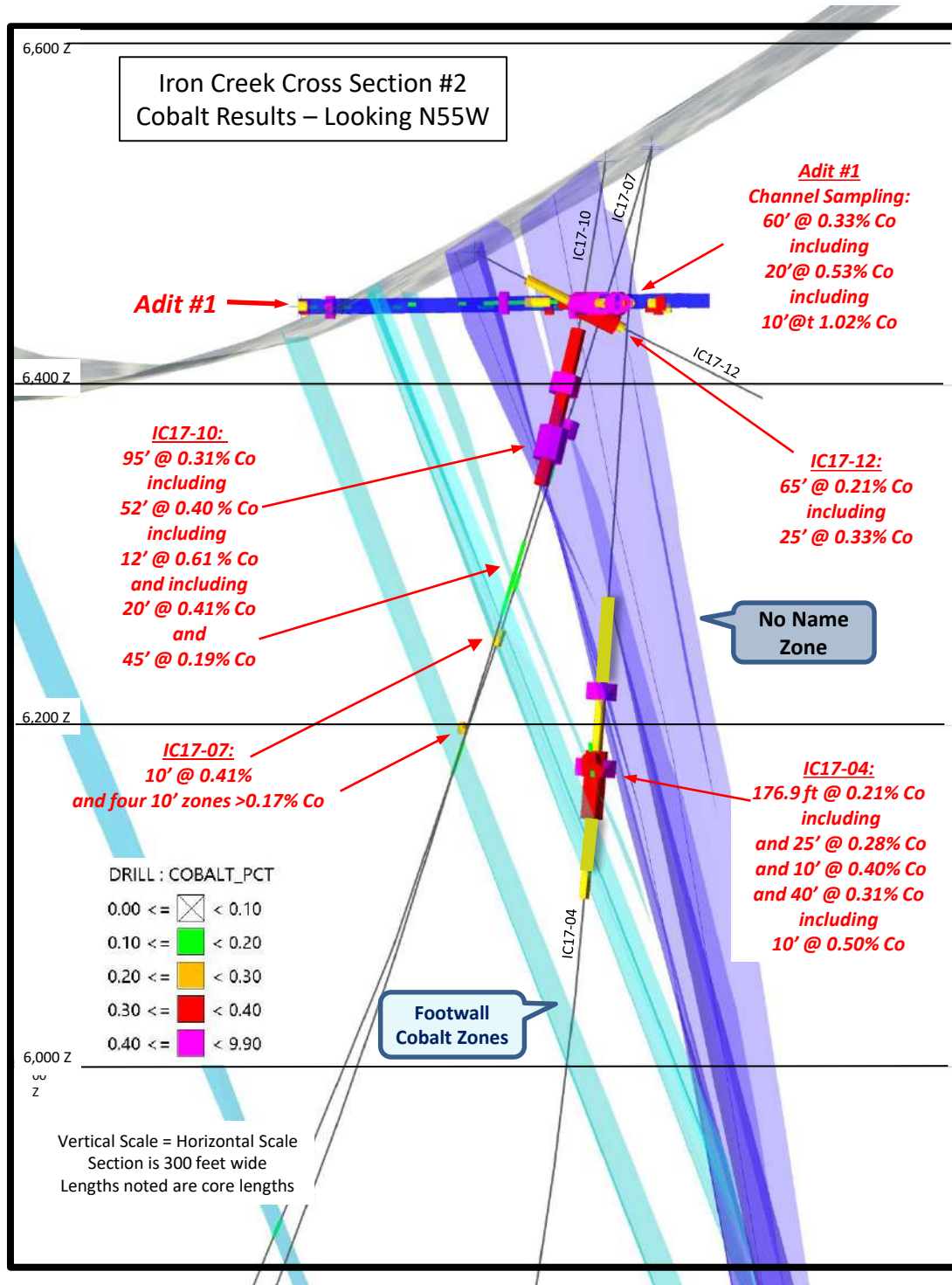




Drill hole IC17-02 massive sulfides



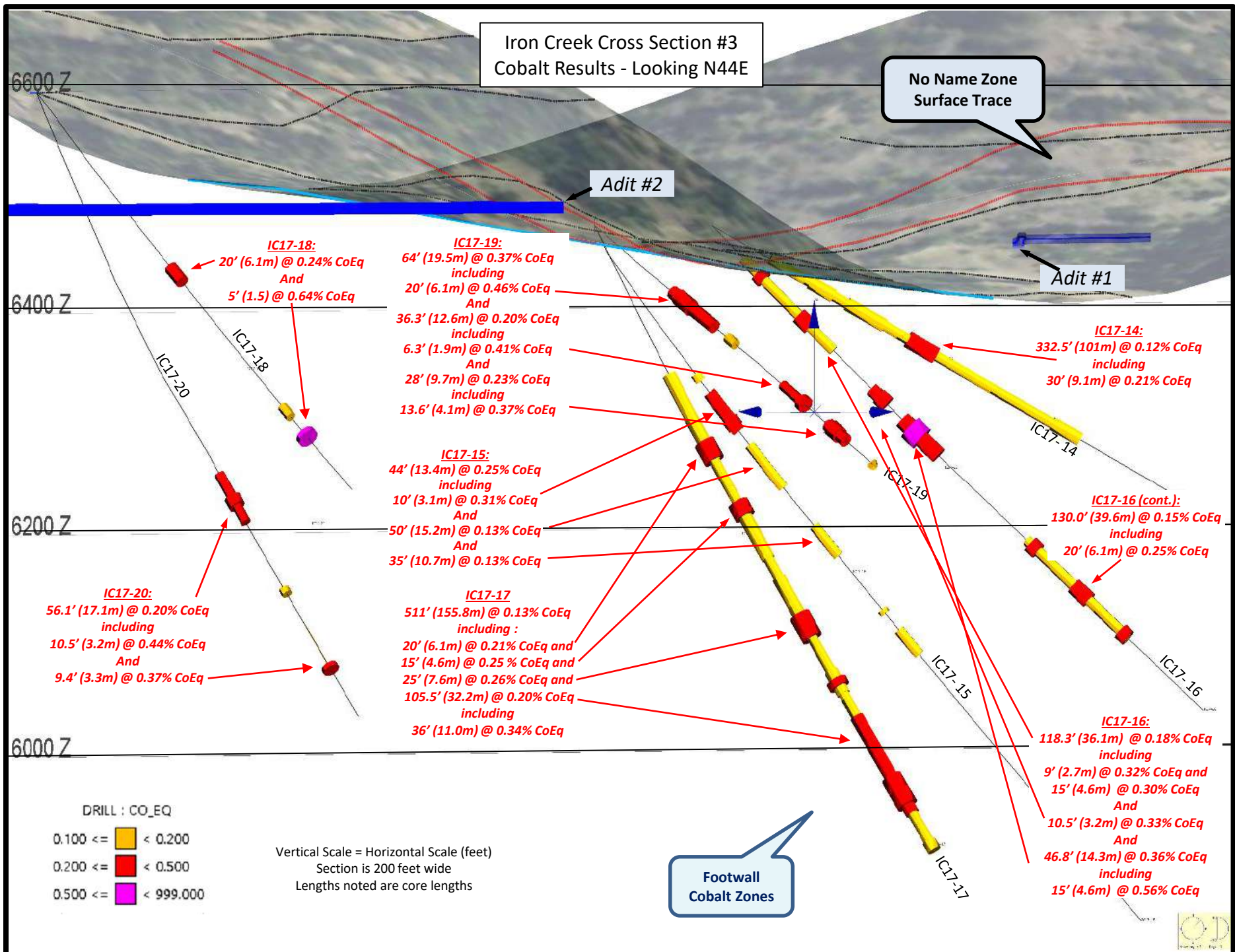
One of Two surface drills active in 2017



Massive sulfides in drill core



Massive sulfides in drill core



Iron Creek Cross Section #4
Cobalt Results - Looking N68W

No Name Zone
Surface Trace

6400Z

6200Z

6000Z

IC17-21:
74.7' (22.8m) @ 0.26% CoEq
including
55.4' (16.9m) @ 0.31% CoEq
which includes
8.9' (2.7m) @ 0.43% CoEq
and includes
10.5' (3.2m) @ 0.56% CoEq
And
46.5' (14.2m) @ 0.24% CoEq
including
13.4' (4.1m) @ 0.55% CoEq
And
31.4' (9.6m) @ 0.17% CoEq
including
10.2' (3.1m) @ 0.26% CoEq

IC17-23:
351.6' (107.2m) @ 0.13% CoEq
including
37.5' (11.4m) @ 0.24% CoEq
which includes
11.1' (3.4m) @ 0.44% CoEq
and including
5.8' (1.8) @ 0.31% CoEq
and including
6.4' (2.0m) @ 0.26% CoEq
and including
15.3' (4.7m) @ 0.22% CoEq


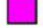
IC17-22:
15.3' (4.7m) @ 0.18% CoEq
including
5.3' (1.6m) @ 0.31% CoEq
And
43.0' (13.1m) @ 0.13% CoEq
including
10.4' (3.2m) @ 0.21% CoEq
and including
8.6' (2.6m) @ 0.27% CoEq
And
333.9' (101.8m) @ 0.14% CoEq
including
36.9' (11.2m) @ 0.30% CoEq
and including
30.0' (9.1m) @ 0.26% CoEq
which includes
8.5' (2.6m) @ 0.62% CoEq
And including
57.3' (17.5m) @ 0.28% CoEq
which includes
22.9' (7.0m) @ 0.47% CoEq

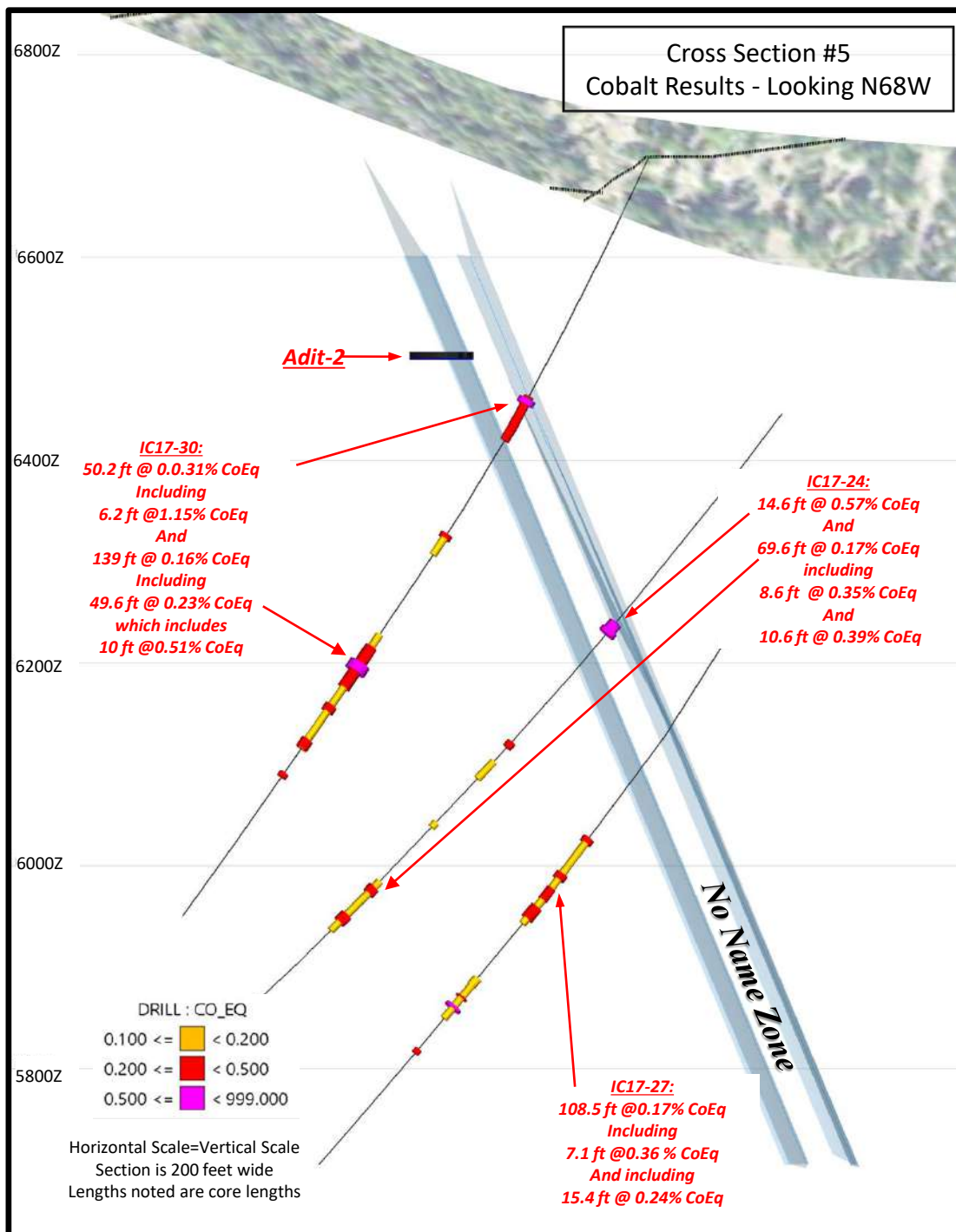
Vertical Scale = Horizontal Scale (feet)
Section is 500 feet wide
Lengths noted are core lengths

Footwall
Cobalt Zones

No Name Zone

DRILL : CO_EQ

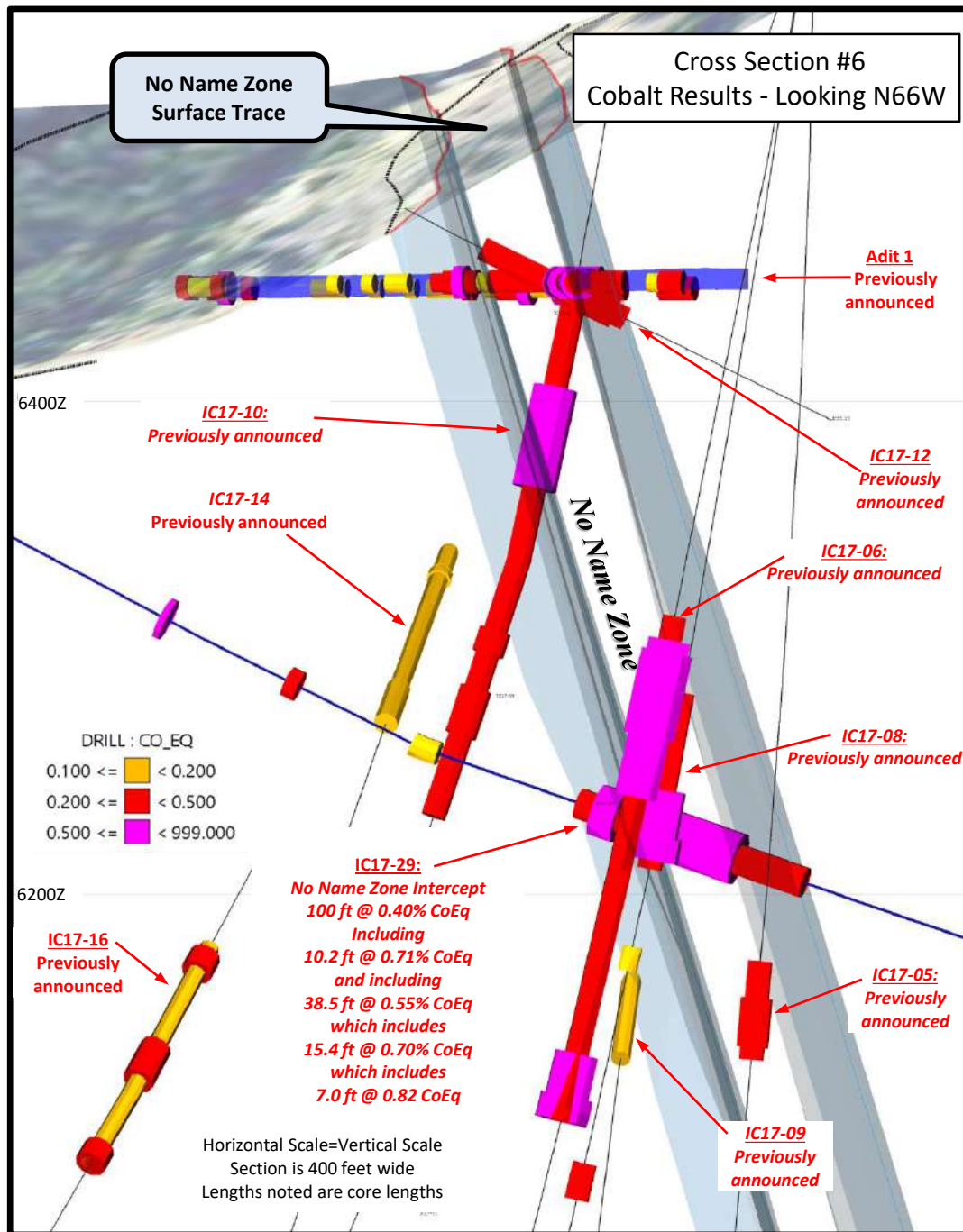
0.100 <=  < 0.200
0.200 <=  < 0.500
0.500 <=  < 999.000



Adit #2, Drill Bay #1 - massive sulfides



Drill in place for 2018 underground program



Adit #2 – Installing phones



Adit #2 – ready for 2018 underground drilling

Drill Results to March 2018

Drill Holes 1 – 13 are reported as Cobalt grades

Expanded sampling for 8 of these holes will be updated as CoEq grades

Hole ID	From	To	Drilled Width	True Width	Average Cobalt %		From	To	Drilled Width	True Width	Average Cobalt %
IC17-01	300	315	15		0.17						
and	430	445	15		0.23						
and	456.7	469	12.3		0.17						
IC17-02	177	247	70		0.44	includes	177	187	10		0.53
						and includes	222	247	25		0.67
IC17-03	240	310	70		0.38	includes	285	305	20		0.78
and	464	475	11		0.21						
IC17-04	265	441.9	176.9		0.21	includes	265	290	25		0.28
						and includes	315	325	10		0.40
						and includes	355	395	40		0.31
						which includes	360	370	10		0.50
IC17-05	430	470	40		0.32	includes	445	465	20		0.40
and	635	660	25		0.25	includes	645	660	15		0.32
and	680	775	95		0.23	includes	740	760	20		0.36
IC17-06	295	400	105		0.38	includes	305	350	45		0.54
						which includes	329.5	345	15.5		0.81
						and includes	360	370.1	10.1		0.79
and	450	500	50		0.28	includes	477	500	23		0.48

Drill Results to March 2018

Drill Holes 1 – 13 are reported as Cobalt grades

Expanded sampling for 8 of these holes will be updated as CoEq grades

Hole ID	From	To	Drilled Width	True Width	Average Cobalt %		From	To	Drilled Width	True Width	Average Cobalt %
IC17-07	170	180	10		0.41						
and	200	210	10		0.18						
and	265	275	10		0.17						
and	300	310	10		0.29						
and	370	390	20		0.13						
and	675	685	10		0.19						
IC17-08	330	393.8	63.8		0.51	includes	365	393.8	28.8		0.73
						which includes	384	393.8	9.8		1.08
and	430	440	10		0.17						
IC17-09	210	240	30		0.18						
and	255	265	10		0.23						
and	395	425	30		0.19	includes	410	420	10		0.30
IC17-10	100	195	95		0.31	includes	128	180	52		0.40
						which includes	128	140	12		0.61
						and includes	160	180	20		0.41
and	230	275	45		0.19						
IC17-11	962.5	967.5	5		0.15						
IC17-12	35	100	65		0.21	includes	70	95	25		0.33
IC17-13	180	191	11		0.14						
and	245	256.5	11.5		0.14						
and	350	355	5		0.23						

Drill Results to March 2018

Drill Holes 14 – 23 are reported as CoEq grades

Hole ID	From feet	To feet	Drilled Length feet	True Thick Feet	True Thick Meters	Cu %	Cobalt%	CoEq%
IC17-14	62	394.5	332.5	116	35.4	0.34	0.09	0.12
including	62	240	178	58.3	17.8	0.23	0.11	0.13
which includes	75.7	92	16.3	5.3	1.6	0.01	0.2	0.2
and includes	105	130	25	11	3.4	0.08	0.12	0.12
and includes	145	185	40	14.5	4.4	0.19	0.14	0.16
and includes	210	240	30	10.6	3.2	0.92	0.12	0.21
and includes	275	394.5	119.5	41.5	12.6	0.56	0.06	0.11
which includes	365	394.5	29.5	10.2	3.1	0.61	0.11	0.16
IC17-15	164	172	8	4.2	1.3	0.04	0.13	0.13
and	185	229	44	23	7.0	0.17	0.23	0.25
which includes	215	225	10	5.4	1.6	0.04	0.31	0.31
and	245	295	50	27.8	8.5	0.12	0.11	0.13
and	340	375	35	18.1	5.5	0.47	0.08	0.13
and	438.6	442.8	8.3	2.2	0.7	0.02	0.16	0.16
and	462.6	491.6	29	14.8	4.5	0.01	0.11	0.11
and	725	735	10	5.2	1.6	0.004	0.14	0.14
IC17-16	41.7	160	118.3	74.6	22.7	0.18	0.16	0.18
which includes	61	70	9	5.9	1.8	0.02	0.32	0.32
and includes	115	130	15	9.6	2.9	0.96	0.21	0.3
and	210	230	20	12.4	3.8	0.49	0.18	0.23
which includes	219.5	230	10.5	6.5	2.0	0.73	0.26	0.33
and	250	296.8	46.8	29.1	8.9	2.39	0.14	0.36
which includes	260	275	15	9.3	2.8	4.05	0.18	0.56
and	410	540	130	82.2	25.1	0.003	0.15	0.15
which includes	415	425	10	6.25	1.9	0.002	0.21	0.21
which includes	470	490	20	12.5	3.8	0.001	0.25	0.25
which includes	530.5	540	9.5	6.2	1.9	0.002	0.22	0.22

Drill Results to March 2018

Drill Holes 14 – 23 are reported as CoEq grades

Hole ID	From feet	To feet	Drilled Length feet	True Thick Feet	True Thick Meters	Cu %	Cobalt%	CoEq%
IC17-17	154.5	665.5	511	364.4	111.1	0.13	0.11	0.13
which includes	154.5	245	90.5	63.4	19.3	0.14	0.1	0.12
which includes	225	245	20	14.1	4.3	0.33	0.18	0.21
and includes	290	350	60	42.9	13.1	0.59	0.08	0.14
which includes	290	305	15	10.6	3.2	1.23	0.13	0.25
and includes	370	435	65	46.9	14.3	0.09	0.18	0.18
which includes	410	435	25	18.14	5.5	0.07	0.25	0.26
and includes	470	495	25	18.15	5.5	0.05	0.15	0.15
which includes	480	487.5	7.5	5.44	1.7	0.03	0.27	0.27
and includes	519.5	625	105.5	78.15	23.8	0.002	0.2	0.2
which includes	585	616	36	23.05	7.0	0.001	0.37	0.37
and includes	655	665.5	10.5	7.8	2.4	0.01	0.15	0.15
IC17-18	245	265	20	18.5	5.6	1.97	0.06	0.24
and	445	460	15	14.1	4.3	0.84	0.04	0.11
and	486.2	491.2	5	4.7	1.4	0.02	0.64	0.64
IC17-19	121	185	64	61.2	18.7	0.67	0.3	0.37
which includes	130	150	20	19.13	5.8	0.30	0.43	0.46
and	205	217.4	12.4	11.9	3.6	0.60	0.12	0.18
and	292	328.8	36.3	35.5	10.8	0.52	0.15	0.2
which includes	322	328.3	6.3	6.1	1.9	0.04	0.41	0.41
and	365	393	28	27	8.2	0.01	0.23	0.23
which includes	370	383.6	13.6	13.13	4.0	0.003	0.37	0.37
and	435	445	10	9.7	3.0	0.003	0.15	0.15
IC17-20	425.5	481.6	56.1	47.4	14.4	1.42	0.07	0.2
which includes	452.5	463	10.5	8.87	2.7	3.02	0.16	0.44
and	562	568.5	6.5	5.76	1.8	0.10	0.17	0.18
and	608.1	661.7	53.6	47.2	14.4	0.002	0.1	0.1
which includes	657	661.7	4.7	4.15	1.3	0.002	0.33	0.33
and	902.5	912.5	10	9.3	2.8	0.02	0.14	0.14
and	983.2	992.6	9.4	8.7	2.7	2.66	0.12	0.37

Drill Results to March 2018

Drill Holes 14 – 23 are reported as CoEq grades

HoleID		From feet	To feet	Drilled Length feet	True thickness feet	True thickness meters	Cobalt%	Copper%	CoEq %
IC17-21		129.0	203.7	74.7	68.4	20.8	0.23	0.32	0.26
	including	129.0	184.4	55.4	50.5	15.4	0.29	0.25	0.31
	which includes	139.8	148.7	8.9	8.1	2.5	0.39	0.34	0.43
	and includes	173.9	184.4	10.5	9.6	2.9	0.53	0.33	0.56
	and	345.6	392.1	46.5	44.2	13.5	0.24	0.01	0.24
	including	357.0	370.4	13.4	12.7	3.9	0.55	0.01	0.55
	and	425.6	457.0	31.4	30.2	9.2	0.17	0.00	0.17
	including	442.8	453.0	10.2	9.8	3.0	0.26	0.00	0.26
	and	583.0	592.1	9.1	8.8	2.7	0.12	0.02	0.12
	and	753.0	762.0	9.0	8.8	2.7	0.10	0.01	0.10
	and	854.8	860.0	5.2	5.1	1.5	0.18	0.03	0.18
IC17-22		332.7	348.0	15.3	10.0	3.1	0.08	1.04	0.18
	including	332.7	338.0	5.3	3.5	1.1	0.11	2.11	0.31
	and	430.0	473.0	43.0	29.2	8.9	0.11	0.16	0.13
	including	444.6	455.0	10.4	7.1	2.2	0.20	0.07	0.21
	and including	464.4	473.0	8.6	5.8	1.8	0.27	0.03	0.27
	and	608.1	942.0	333.9	232.7	70.9	0.14	0.02	0.14
	including	638.6	675.5	36.9	26.0	7.9	0.30	0.01	0.30
	and including	691.5	721.5	30.0	20.7	6.3	0.26	0.00	0.26
	which includes	713.0	721.5	8.5	5.8	1.8	0.62	0.00	0.62
	and including	884.7	942.0	57.3	40.3	12.3	0.28	0.01	0.28
	which includes	890.5	913.4	22.9	16.0	4.9	0.47	0.01	0.47
IC17-23		149.2	606.2	457.0	308.0	93.9	0.10	0.07	0.11
	including	149.2	500.8	351.6	233.7	71.2	0.12	0.08	0.13
	which includes	186.5	224.0	37.5	24.5	7.5	0.22	0.16	0.24
	which includes	212.9	224.0	11.1	7.3	2.2	0.41	0.31	0.44
	and including	243.0	273.7	30.7	20.6	6.3	0.13	0.11	0.14
	and including	305.0	382.9	77.9	52.0	15.8	0.13	0.15	0.14
	which includes	372.2	378.0	5.8	3.9	1.2	0.21	1.08	0.31
	and including	398.6	455.8	57.2	38.9	11.9	0.14	0.02	0.14
	which includes	398.6	405.0	6.4	4.4	1.3	0.26	0.04	0.26
	and including	485.5	500.8	15.3	10.4	3.2	0.22	0.01	0.22
	and including	570.1	606.2	36.1	26.3	8.0	0.11	0.00	0.11
	which includes	591.0	601.8	10.8	7.5	2.3	0.16	0.00	0.16

Drill Results to March 2018

Drill Holes 24, 25 and 27 are reported as CoEq grades

Hole ID and description		From feet	To feet	Drilled Length feet	True Width feet	True Width meters	Cobalt %	Copper%	CoEq %
IC17-24 Western extent - exploration	Interval	633.1	647.7	14.6	12.8	3.9	0.23	3.53	0.57
	including	642.5	647.7	5.2	4.6	1.4	0.44	3.89	0.81
	Interval	792	799.2	7.2	6.4	2.0	0.20	0.36	0.23
	Interval	818.6	842.4	23.8	21.4	6.5	0.12	0.01	0.13
	Interval	903	909.6	6.6	6.0	1.8	0.17	0.00	0.17
	Interval	985.2	1054.8	69.6	63.3	19.3	0.17	0.00	0.17
	including	993.5	1002.1	8.6	7.8	2.4	0.35	0.00	0.35
	and including	1032.4	1043	10.6	9.7	3.0	0.39	0.00	0.39
	Interval	1088.4	1099.6	11.2	10.2	3.1	0.10	0.00	0.10
IC17-25 Between the two Historic Estimate Targets	Interval	202.7	365.9	163.2	66.1	20.1	0.11	0.06	0.11
	including	204	216.2	12.2	4.9	1.5	0.22	0.05	0.23
	and including	289.5	297.8	8.3	3.3	1.0	0.30	0.03	0.31
	Interval	454.4	480	25.6	10.5	3.2	0.21	0.01	0.21
	Interval	522.1	629.4	107.3	46.4	14.1	0.15	0.01	0.15
	including	530.8	537.8	7.0	3.0	0.9	0.27	0.03	0.27
	and including	601.8	623.2	21.4	9.3	2.8	0.37	0.00	0.37
	Interval	673.5	679	5.5	2.4	0.7	0.25	0.00	0.25
IC17-27 Western extent - exploration	Interval	826.3	934.8	108.5	93.2	28.4	0.17	0.01	0.17
	including	826.3	832.5	6.2	5.3	1.6	0.22	0.14	0.24
	and including	870.8	877.9	7.1	6.1	1.9	0.36	0.00	0.36
	and including	888.9	903.8	14.9	12.8	3.9	0.20	0.00	0.20
	and including	913	928.4	15.4	13.5	4.1	0.24	0.00	0.24
	Interval	1005.8	1058.2	52.4	45.8	14.0	0.11	0.01	0.11
	including	1005.8	1015.3	9.5	8.3	2.5	0.16	0.01	0.17
	and including	1029.9	1031.9	2.0	1.7	0.5	0.23	0.02	0.23
	and including	1042.2	1045.4	3.2	2.8	0.9	0.53	0.01	0.53
	Interval	1098.2	1103.5	5.3	4.7	1.4	0.20	0.00	0.20

Drill Results to March 2018

Drill Holes 29 and 30 are reported as CoEq grades

Hole ID and description		From feet	To feet	Drilled Length feet	True Width feet	True Width meters	Cobalt %	Copper%	CoEq %
IC17-29 Main Historic Estimate Target	Interval	182.3	185	2.7	1.9	0.6	0.52	0.08	0.52
	Interval	239.8	245.4	5.6	4.1	1.2	0.34	0.10	0.35
	Interval	297.5	309	11.5	8.9	2.7	0.13	0.00	0.13
	Interval	371	471	100.0	78.4	23.9	0.35	0.53	0.40
	including	379.1	389.3	10.2	8.0	2.4	0.71	0.01	0.71
	and including	403.2	441.7	38.5	30.2	9.2	0.46	0.92	0.55
	which incl.	403.2	418.6	15.4	12.1	3.7	0.60	1.11	0.70
	which incl.	411.6	418.6	7.0	5.5	1.7	0.71	1.23	0.82
IC17-30 Western extent - exploration	Interval	265	315.2	50.2	39.3	12.0	0.07	2.58	0.31
	including	268	274.2	6.2	4.8	1.5	0.09	11.28	1.15
	Interval	425	450	25.0	20.6	6.3	0.11	0.37	0.15
	including	425	430	5.0	4.1	1.2	0.33	1.06	0.43
	Interval	546	685	139	115.0	35.1	0.14	0.20	0.16
	including	561	610.6	49.6	41.0	12.5	0.19	0.44	0.23
	which incl.	581	591	10.0	8.2	2.5	0.47	0.39	0.51
	and including	632.4	640	7.6	6.3	1.9	0.34	0.01	0.34
	and including	674.3	685	10.7	8.9	2.7	0.21	0.00	0.21
	Interval	715	720	5.0	4.1	1.2	0.27	0.00	0.27

Management

WAYNE TISDALE

President, CEO & Director

Wayne Tisdale has 40 years of experience in investing, financing and consulting to private and public companies in the areas of mining, oil and gas, and agriculture. He runs his own merchant bank and sits on the board of a number of private and public companies. Over his career, Mr Tisdale has raised over \$2bn of both equity and debt financing and has been instrumental in founding several highly successful companies, including Rainy River Resources (purchased by Newgold) and Ryland Oil Corporation (purchased by Crescent Point).

BRIAN KIRWIN

Senior Vice President, Exploration & Director

Mr. Kirwin, BA Earth Sciences, Dartmouth College, MSc Mineral Exploration, Queen's University, is an accomplished mining executive and geoscientist with over 33 years of experience with both senior and junior mining companies. Mr. Kirwin began his career in mining, working in exploration and corporate development on projects, from grass roots to mines, for companies such as Placer Dome, Freeport McMoRan and Cominco. He has served in leadership positions in various capacities from CEO and founder of American Bonanza Gold Corp. and Nevada Copper to VP Exploration for Vengold Inc. With global experience evaluating and developing deposits, mines and risk worldwide, Mr. Kirwin has led his teams to several discoveries.

Management

MICHELLE GAHAGAN

Chair & Director

Ms. Gahagan has been a director of US Cobalt since January, 2011. Ms. Gahagan is currently a director of Moovly Media Inc (TSXV: MVY) and Versus Systems Inc. (CSE:VS). Prior to her involvement in merchant banking, Ms. Gahagan graduated from Queens University Law School and practiced corporate law for 20 years. Ms. Gahagan has extensive experience advising companies with respect to international tax-driven structures, mergers and acquisitions. Ms. Gahagan has successfully completed the Investment Management Certificate course offered by the Financial Conduct Authority (UK).

GARRY CLARK

Independent Director

Mr Clark is the Executive Director of the Ontario Prospectors Association (OPA). He has been a Director, Vice President or President of the OPA since its formation in the early 1990s. Mr Clark currently serves on the Minister of Mines Mining Act Advisory Committee (Ontario) and the Ontario Geological Survey Advisory Board. He graduated with a BSc (Geology) from Lakehead University, Thunder Bay. Mr Clark brings to the company extensive experience in managing large scale exploration and development programs internationally including Asia and North America. In addition to over 30 years of consulting experience, he has held geological positions with a number of mining companies and has served as a director of other TSX Venture Exchange listed companies, including his current position with NexOptics Technologies and Kapuskasing Gold.

JAMES WELYKOCHY

Independent Director

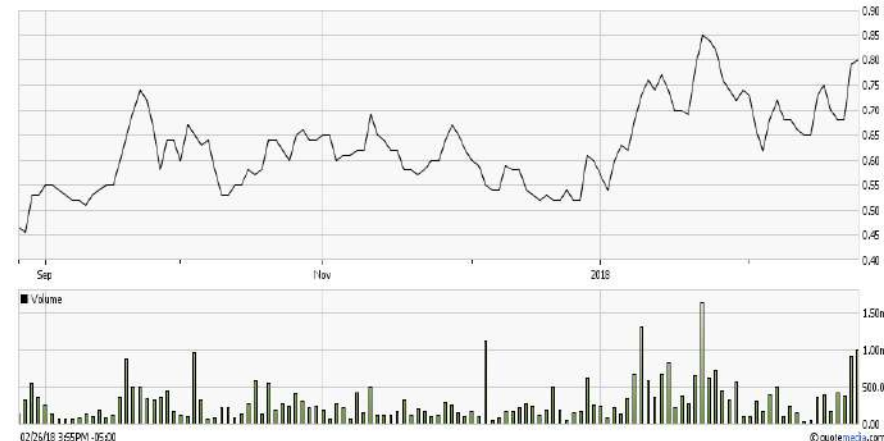
Mr James Welykochy has over 30 years of experience in the oil and gas industry and energy related capital markets. He is a Professional Geologist (a member of APEGA and CSPG) and also has considerable experience in the capital markets having held various roles as an equity analyst as well as being involved in institutional sales and corporate finance and investment banking. Mr. Welykochy also has experience as a member of the board of directors of other public companies including LGX Oil & Gas Inc. and Ryland Oil Corporation.

Capital Structure

TRADING SYMBOLS:

TSX Venture	USCO
Frankfurt	26X
US	USCFF

Outstanding	67.2 Million
Warrants	17.3 Million
52 week High	\$0.99
52 week Low	\$0.45



Source: www.tmxmoney.com 2/26/2018, Six month chart

FINANCINGS TO DATE:

\$2m at \$0.20
 \$500k at \$0.23
 \$1m at \$0.45
 \$1.7m at \$0.85
 \$5.75m at \$0.53

FUTURE FINANCING NEEDS:

The company is fully financed to execute its current exploration program. An additional private placement may be considered in order to expedite the conversion of the substantial historical data in order to comply with current NI 43-101 standards.

Contact

CORPORATE ADDRESS:

302 – 1620 West 8th Ave.
Vancouver, BC
V6J 1V4 Canada

www.uscobaltinc.com

**FOR FURTHER INFORMATION
PLEASE CONTACT:**

Kelsey Chin
Corporate Secretary

Phone: (604) 639 4457

Email: info@uscobaltinc.com

